

ScichemTech® - SCT - PRESSURE GAUGES

SCT BOURDON SPRING PRESSURE GAUGES AYTN - SERIES LIQUID FILLED PRESSURE GAUGES

AYTN- Series liquid filled pressure gauge fill damping fluid (silicone oil, glycerol) in the gauge and other measures to ensure that it has excellent function of impact resistance and aseismatic So it is safe and reliable, with stable performance and long useful -life It is apply to mechanical. Chemical. metallurgy. mine. Electrical, Measure the pressure of medium is non corrosive for copper and alday. If measure the pressure of high corrosive medium, all material of pressure gauge must be stainlee steel.



Diameter	Model	Installation	Measure Range (MPa)	Screw Thread	Case material	Accuracy
1 1/2 "	SCT-AYTN-40	Bottom connection	0.1 0.16 0.25 0.4 0.6 1 1.6 2.5 4 6	G1/8" ZG1/8" Z1/8" M10×1	SS 304	±2.5
	SCT-AYTN-40Z	Back connection				
	SCT-AYTN-40ZT	Back connection with border				



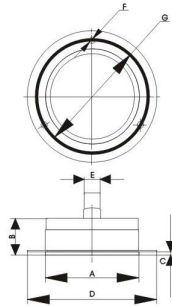
Diameter	Model	Installation	Measure Range (MPa)	Screw Thread	Case material	Accuracy
2 "	SCT-AYTN-50	Bottom connection	0.1 0.16 0.25 0.4 0.6 1 1.6 2.5 4 6 10 16 25 40	G1/8" G1/4" ZG1/8" ZG1/4" Z1/8" Z1/4" M14×1.5	SS 304	±2.5
	SCT-AYTN-50Z	Back connection				
	SCT-AYTN-50ZT	Back connection with border				



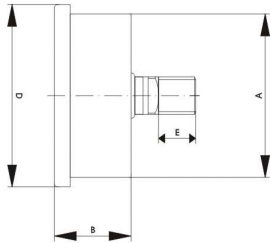
Diameter	Model	Installation	Measure Range (MPa)	Screw Thread	Case material	Accuracy
2 1/2 "	SCT-AYTN-60	Bottom connection	0.1 0.16 0.25 0.4 0.6 1 1.6 2.5 4 6 10 16 25 40 60	G1/8" G1/4" ZG1/8" ZG1/4" Z1/8" Z1/4" M14×1.5	SS 304	±2.5
	SCT-AYTN-60Z	Back connection				
	SCT-AYTN-60ZT	Back connection with border				

Note: G=BSP ZG=BSPT Z=NPT

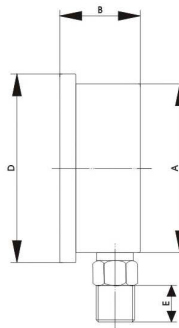
SCT-AYTN - SERIES LIQUID FILLED PRESSURE GAUGES



Diameter	Model	Installation	Measure Range (MPa)	Screw Thread	Case material	Accuracy
3"	SCT-AYTN-75	Bottom connection	0.1 0.16 0.25	G1/8"	SS 304	±2.5
	SCT-AYTN-75Z	Back connection	0.4 0.6 1	G1/4"		
			1.6 2.5 4	ZG1/4"		
SCT-AYTN-75ZT	Back connection with border	6 10 16 25 40 60	Z1/8" Z1/4" M14×1.5			



Diameter	Model	Installation	Measure Range (MPa)	Screw Thread	Case material	Accuracy
4"	SCT-AYTN-100	Bottom connection	0.1 0.16 0.25	G1/2"	SS 304	±1.6
	SCT-AYTN-100Z	Back connection	0.4 0.6 1	ZG1/2"		
			1.6 2.5 4	G3/8"		
SCT-AYTN-100ZT	Back connection with border	6 10 16 25 40 60	Z1/2" Z3/8" M20×1.5			



Installation Size

Model	40	50	63	75	100
A	42	58	63	82	109
B	26	29	31	31	37
C	3	3	3	3	3
D	62	73	88	105	130
E	11	14	14	14	17
F	3.5	4	5	5	4
G	52	64	78	91	115

Working condition of liquid filled pressure gauge

Note: G=BSP ZG=BSPT Z=NPT

- 1) Environment Temperature - 40°C ~ + 70°C.
- 2) The values of working pressure tested under static pressure conditions should be within 1/3 to 3/4 of the upper limit of the pressure; and the values of working pressure tested undersurge pressure conditions should be within 1/3 to 2/3 of the upper limit of the pressure.
- 3) Relative Humidity ≤ 80 %.
- 4) The swings of vibration frequency under working modes should be no more than 25Hz and no more than the medium vibration of 1mm.
- 5) Gauge must be installed vertical, do not turn the case by hand when installation and disassembly.